

Powered Respiratory System



MAX Miner E140ISEWUSA

Intrinsically Safe MAX INTEGRA for Mining

The intrinsically safe Integra Max helmet offers fully-integrated respiratory, head, face and hearing protection - for use in the toughest mining environments.

So advanced are Max components that a new British Standard (PAS016) had to be written to accommodate them - while also meeting European safety standard EN397 for head protection and all relevant standards for individual elements.

Revolutionary advances include the extremely lightweight shell combined with a powered air circulation system generating no more noise than the human voice. The electrostatic dust filter is capable of removing 95% of particles.

The helmet is available with Connect clips fitted to take the Centurion Connect® range of welding shields, carriers and face screens, creating a very broad spectrum of applications. The battery is mounted inside the helmet shell of the Integra.

The MAX INTEGRA USA, P/N E140ISEWUSA, has been tested for intrinsic safety in methane air mixtures only and carries MSHA Approval No.2G-4106-01.

- Highly practical and comfortable helmet unit, CE approved to THP2, PAS 016
- Advanced composite GRP shell for exceptional lightness with strength, conforming to EN397
- Retractable and impact-resistant visor, conforming to EN166 Class B
- Anti-mist visor for improved performance
- Anti-scratch visor option available
- Quick-replacement, electrostatic filter cartridge which eliminates the need for pre-filters
- Aerodynamic airflow fan producing typical flow rates of up to 170 litres of filtered air per minute
- Extremely quiet, generating only 65dB for greater user comfort
- Ear defenders are easily moved away when not required, with three-point adjustment for better fit
- Ear defenders meet acoustic performance requirements of EN352-3, with attenuation levels of H-26, M-19, L-14, SNR-22

Martindale

Leading Respiratory Protection Technology

Powered Respiratory Systems

INTEGRA USA

Helmet weight	1400 grams (3 pounds) approx
Battery mounting	Inside helmet shell
Battery type	NiMH (Nickel Metal Hydride)
Battery duration	8 hours
Visor type	Anti-mist
Specific European standard	PAS 016, EN146 THP2 EN397, EN166 B, EN352-3 EN50014, EN50020, EEx ia IIBT3
Other approvals	MSHA 2G-4106-01
Code no.	E140ISEWUSA

Batteries included within Integra helmet. Battery chargers purchased separately



With the Max Integra for mining a cap lamp bracket is fitted

EXPLANATION OF STANDARDS

PAS016	Integrated Protection Helmets	EN166 B	Personal eye-protection – Specifications. Medium energy Impact (B)
EN146 THP2	Respiratory protective devices. Specification for powered particle filtering devices incorporating helmets or hoods. (These are classified and designated as a function of their maximum total inward leakage as a percentage* when measured against sodium chloride at the manufacturer's minimum design flow rate. *P1 = 10% ie 90% efficient P2 = 5% ie 95% efficient)	EN352-3	Hearing Protectors – Safety requirements and testing Part 3. Ear-muffs attached to an industrial safety helmet
EN397	Specification for Industrial Safety Helmets.	EN50014	Electrical apparatus for potentially explosive atmospheres – general requirements
		EN50020	Electrical apparatus for potentially explosive atmospheres – Intrinsic safety (i)
		EEx ia IIBT3	Intrinsic safety certification classification



With the Max Integra airflow commences when the visor is lowered

ACCESSORIES

CODE NO.

Charger for Integra 8 hour Battery, 115 Volt 1 Phase 60 Hz	E346
Filter - Standard. High performance, electrostatic filter	E200
Filter - Carbon. As E200 but carbon impregnated for nuisance odour removal	E201
P1 Visor - Anti-Scratch	E210
P1 Visor - Anti-Mist	E211
P2 Visor - Anti-scratch (with face seals)	E212
P2 Visor - Anti-mist (with face seals) - Standard	E213
P1 Head Seal Kit	E220
P2 Head and Face Seal Kit - Standard	E221
Headband Cradle and Pad Kit. Adjustable 51-62cm	E225
Hygiene Kit for Ear Defenders	E230
Ear Defenders (pair)	E235
Chinstrap - Nylon	E240
Chinstrap - Leather	E241
Plug Cover	E245
Reflective Kit	E246
Airflow Indicator	E305



Max Integra with Connect® clips, Centurion Hi-Tem 300 face screen carrier (S57) and Gold Polycarbonate face screen (S760)

Centurion range of Connect accessories are available for fitting onto helmets with Connect clips fitted.

Whilst every effort is made to ensure the accuracy of product information, Centurion Safety Products Ltd reserves the right to improve and modify specifications at any time without prior notice

Martindale

Centurion Safety Products Ltd

Howlett Way, Thetford, Norfolk, IP24 1HZ, England

Tel: +44 (0)1842 754266 • Fax: +44 (0)1842 765590

www.centurionsafety.co.uk •

E-mail: sales@centurionsafety.co.uk

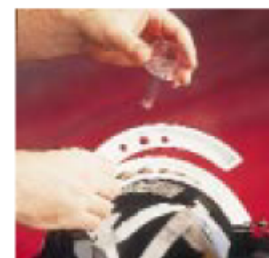
MPS MINE AND PROCESS SERVICE INC.

MINE AND PROCESS SERVICE INC.

BOX 484 • KEWANEE, ILLINOIS 61443

Phone: 309-852-6529 • Fax: 309-854-5206

E-mail: mail@go-mpsinc.com



Airflow Indicator (E305)